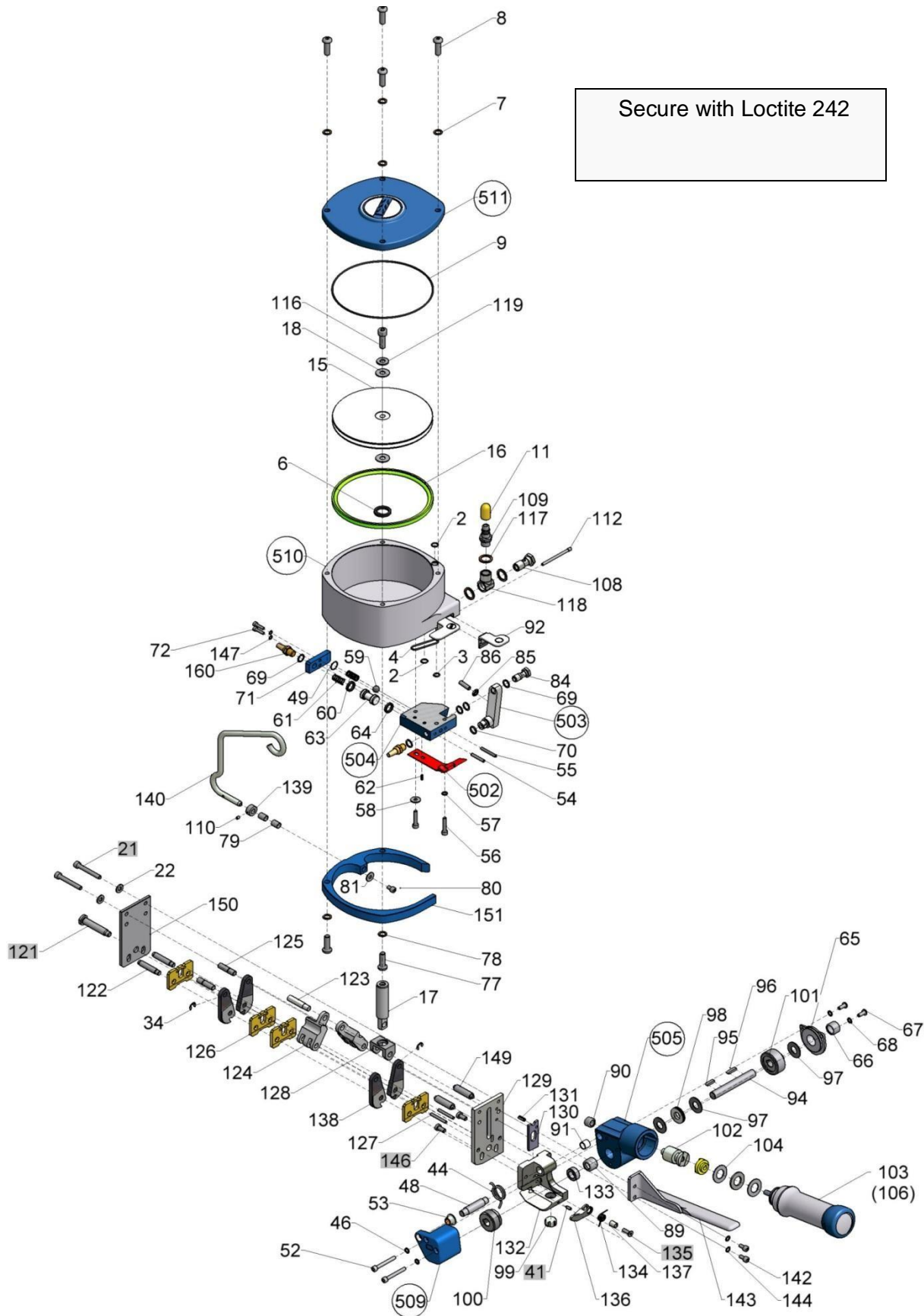


12. Exploded drawing



13. Spare parts list

Pos.	Description	St Pcs Pc	
2	O-ring Ø 8x1,5	2	
3	O-ring Ø 7x1,5	1	
4	O-ring Ø 30x2	1	
6	Turcon-Glyd Ring	1	
7	Locking washer	4	
8	Screw M8x25	4	
9	O-ring	1	
11	Submersible cap	1	
13	Operating pressure plate	1	
14	CE sign	1	
15	Piston	1	
16	Turcon-Glyd ring	1	
17	Piston rod	1	
18	Axial washer	2	
21	Screw M6x45	2	
22	Conical spring washer	2	
34	Locking washer	2	
41	Threaded pin M4x10	1	
44	Torsion spring	1	
46	Locking washer	2	
48	Rocking bolt	1	
49	O-ring Ø 12x1	1	
52	Screw M5x45	2	
53	DU bushing	1	V
54	Pin Ø 4m6x26	1	
55	Pin	1	
56	Screw M5x25	2	
57	Locking washer	1	
58	Conical spring washer	1	
59	Ball	1	
60	Pressure spring	1	
61	Pressure spring	1	
62	Tension sleeve	1	
63	Valve piston	1	
64	Turcon-Glyd ring	2	

Pos.	Description	St Pcs Pc	
65	Gear unit cover	1	
66	Needle bushing	1	V
67	Screw M5x12	2	
68	Locking washer	2	
69	Sealing ring	5	
70	O-ring Ø 9x2	1	
71	Valve cover	1	
72	Screw M4x12	2	
77	Screw M8x25	2	
78	Locking washer	2	
79	Tolerance ring	2	V
80	Screw M5x8	1	
81	Washer	1	
84	Banjo bolt	1	
85	Nut M8x1	1	
86	Threaded pin	1	
89	Needle sleeve	1	V
90	Needle sleeve	1	V
91	DU bushing	1	V
92	Tension lever	1	V
93	Locking lever	1	V
94	Tension shaft	1	
95	Feather key	1	
96	Feather key	1	
97	Axial washer	3	
98	Axial bearings	1	
99	Guide screw	1	V
100	Transport wheel	1	V
101	Worm gear	1	V
102	Worm	1	V
103	Compressed air motor	1	
104	Axial washer	2	V
105	Axial bearings	1	V
106	Compressed air motor	1	
108	Banjo bolt	1	
109	Nipple	1	
110	Threaded pin	1	
112	Lever axe	1	
116	Screws M8x20	1	
117	Sealing ring	3	
118	Fitting	1	
119	Conical spring washer	1	

Pos.	Description	St Pcs Pc	
120	Needle sleeve	1	
121	Middle bolt	1	
122	Double jaw bolt	2	
123	Piston pin	1	
124	Toggle arm	2	
125	Toggle bolt	2	
126	Notching cutter	4	
127	Pin Ø4m6x32	2	
128	Guidance	1	
129	Cover plate	1	
130	Cutter	1	V
131	Tension sleeve	1	V
132	Tension element	1	V
133	Distance sleeve	1	
134	Torsion spring	1	
135	Countersunk flat bolt	1	
136	Strap guidance	1	V
137	Bushing	1	
138	Screw die	4	V
139	Ring	1	
140	Suspension shackle	1	
142	Cylinder screws	2	
143	Lifting lever	1	
144	Conical spring washer	2	
146	Screw M6x12	2	
147	Locking washer	2	
149	Block bolt	2	
150	Cover plate front	1	
151	Shackle holder	1	
160	Silencer	2	
502	Locking lever, complete	1	V
503	Rotary transmission lead through	1	
504	Valve housing, complete	1	
505	Gearbox, complete	1	
509	Rocking bearings, complete	1	
510	Cylinder, complete	1	
511	Cover, complete	1	

Order from Allstrap 866-779-2673

**The TITAN
range of products**

Strapping tools

for steel and plastic strap

**Strapping machines and
aggregates**

for steel and plastic strap

Baling systems

for steel and plastic strap

Crimp systems

Strip joining devices

Strapping

Steel and plastic strap

Seals

Accessories

Distributed By:

Allstrap

1719 Kenny Rd

Columbus, OH, 43212