



OPERATION, PARTS AND SAFETY MANUAL

DTF-125 MANUAL TENSIONER

Part No. 306135

GENERAL SAFETY CONSIDERATIONS

1. **EYE INJURY HAZARD.**
Failure to wear safety glasses with side shields can result in severe eye injury or blindness. Always wear safety glasses with side shields which conform to ANSI Standard Z87.1.
2. **STRAP BREAKAGE HAZARD.**
Improper operation of the tool or sharp corners on the load can result in strap breakage during tensioning, which could result in the following:
 - A sudden loss of balance causing you to fall.
 - Both tool and strap flying violently towards your face.

Failure to place the strap properly around the load or on an unstable or shifted load could result in a sudden loss of strap tension during tensioning. This could result in a sudden loss of balance causing you to fall.

Read the tools operating instructions. If the load corners are sharp use edge protectors. Place the strap correctly around a properly positioned load.

Positioning yourself in-line with the strap, during tensioning and sealing, can result in severe personal injury from flying strap or tool. When tensioning or sealing, position yourself to one side of the strap and keep all bystanders away.
3. **FALL HAZARD.**
Maintaining improper footing and/or balance when operating the tool can cause you to fall. Do not use the tool when you are in an awkward position.
4. **CUT HAZARD.**
Handling strap or sharp parts could result in cut hands or fingers. Wear protective gloves.
5. **TRAINING.**
This tool must not be used by persons not properly trained in their use. Be certain that you receive proper training from your employer. If you have any questions contact your Acme Representative.
6. **TOOL CARE.**
Take good care of the tool. Inspect and clean it daily, lubricate it weekly and adjust when necessary. Replace any worn or broken parts.
7. **WORK AREA.**
Keep work areas uncluttered and well lighted.

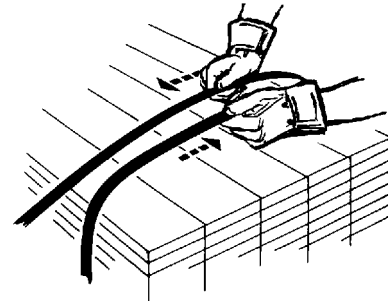
STRAP SPECIFICATIONS

Width: 3/4" to 1-1/4" Steel
Gauge: .025 to .035" Thick

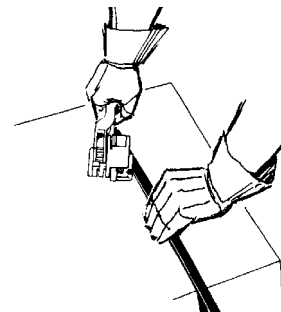


OPERATING INSTRUCTIONS

1. Drape strapping around the container as illustrated. Take up slack, keeping straps squarely in line.



2. While standing to one side of the strap line, hold the hand tensioned strap in position with your left hand, grasp the tool in your right hand and squeeze the handle to the base, thus, lifting the feedwheel. Position the rear foot over the strap and then slide the front foot under the overlapping ends approximately 2"-4" ahead of the lower strap end.



Acme Sales
501 W. Lake Street • Suite 105 • Elmhurst, IL 60126
1-630-589-5100

© Copyright 2008, Acme 512155 Rev. 11/2008

Distributed By:

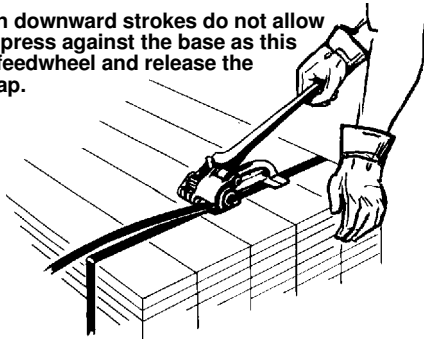
Allstrap

1719 Kenny Rd
Columbus, OH, 43212

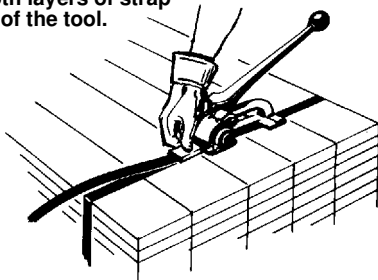
OPERATING INSTRUCTIONS, Continued

- Release grip on tool to engage strapping, being sure strap is in alignment with tool. Tension is obtained through continuous up and down motion with the handle.

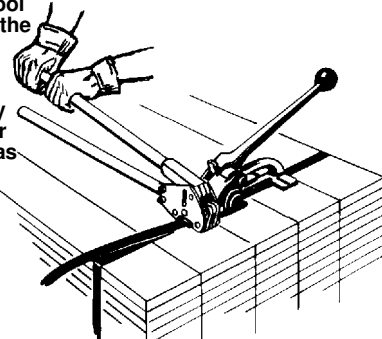
WARNING: On downward strokes do not allow the handle to press against the base as this will raise the feedwheel and release the tensioned strap.



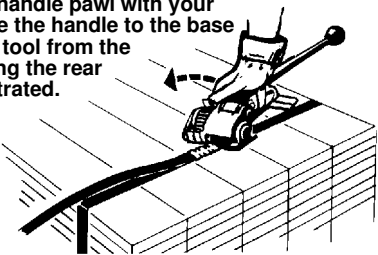
- Snap seal on both layers of strap directly in front of the tool.



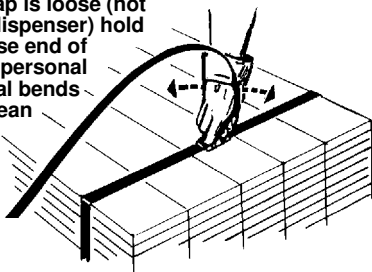
- Hold the sealing tool at a right angle to the strap, resting it squarely over the seal. Seal the tensioned strap by bringing the sealer handles together as far as they will go.



- Return the tensioning handle to rest on the tool, depressing the handle pawl with your thumb. Squeeze the handle to the base and remove the tool from the strap by swinging the rear foot out as illustrated.



- Carefully bend the excess strap sharply back on the seal. If the excess strap is loose (not connected to a dispenser) hold down on the loose end of strap to prevent personal injury. Additional bends will result in a clean strap break off.



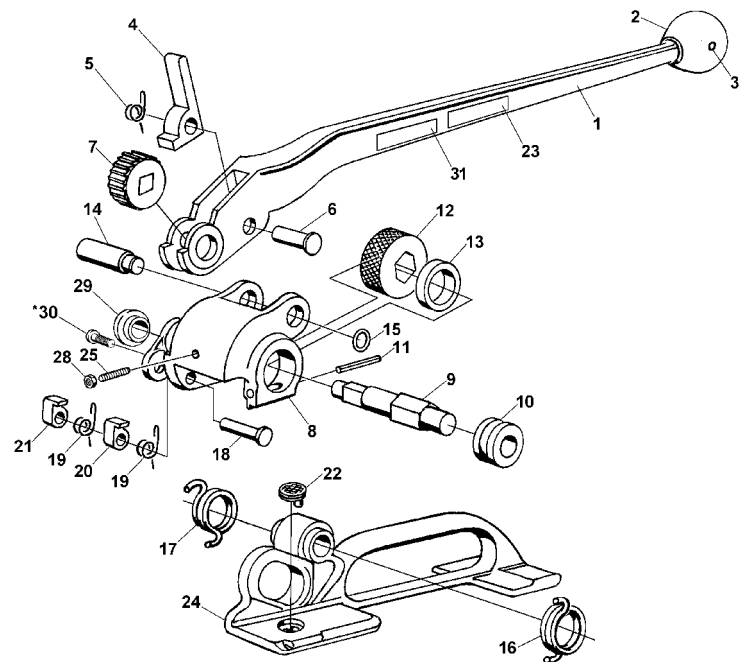
PARTS LIST

KEY	QTY	PART#	DESCRIPTION
1	1	306139	Handle
2	1	306230	Knob
3	1	010057	Roll pin 1/4 x 1 3/4
4	1	020512	Handle pawl
5	1	020511	Handle pawl spring
6	1	007507	Cross head pin
7	1	020510	Ratchet gear
8	1	306138	Support frame
9	1	020504	Shaft
10	1	020506	Bushing
11	1	023080	Roll pin, 3/16 x 7/8
12	1	173340	Feedwheel
13	1	020505	Strap spacer
14	1	020509	Support pin
15	1	008671	Retaining ring
16	1	020508	Retaining support spring
17	1	020570	Feedwheel support spring
18	1	020516	Retaining pawl pin
19	2	003483	Pawl spring
20	1	020514	Long pawl
21	1	020515	Short pawl
22	1	020507A	Clutch plug assembly
23	1	003133	Danger sign
24	1	306137	Base assembly
25	1	015747	SHSS, 1/4-28 x 5/8, flat point
28	1	424270	Hex nut, steel
29	1	424250	Bushing
30	1	424251	BHCS, 1/4-28 x 1/4
31	1	584-1032	Nameplate

When ordering parts, please show tool model, part number and name. All recommended spare parts are underlined and should be stocked.

For Parts Support Call 1-800-541-5736

* Apply one drop of Loctite #271 (Red) or equivalent.



Distributed By:
Allstrap

1719 Kenny Rd
Columbus, OH, 43212

⚠ WARNING

Inspect all parts daily and replace them if they are worn or broken. Failure to do this can affect a product's operation and could result in serious personal injury.