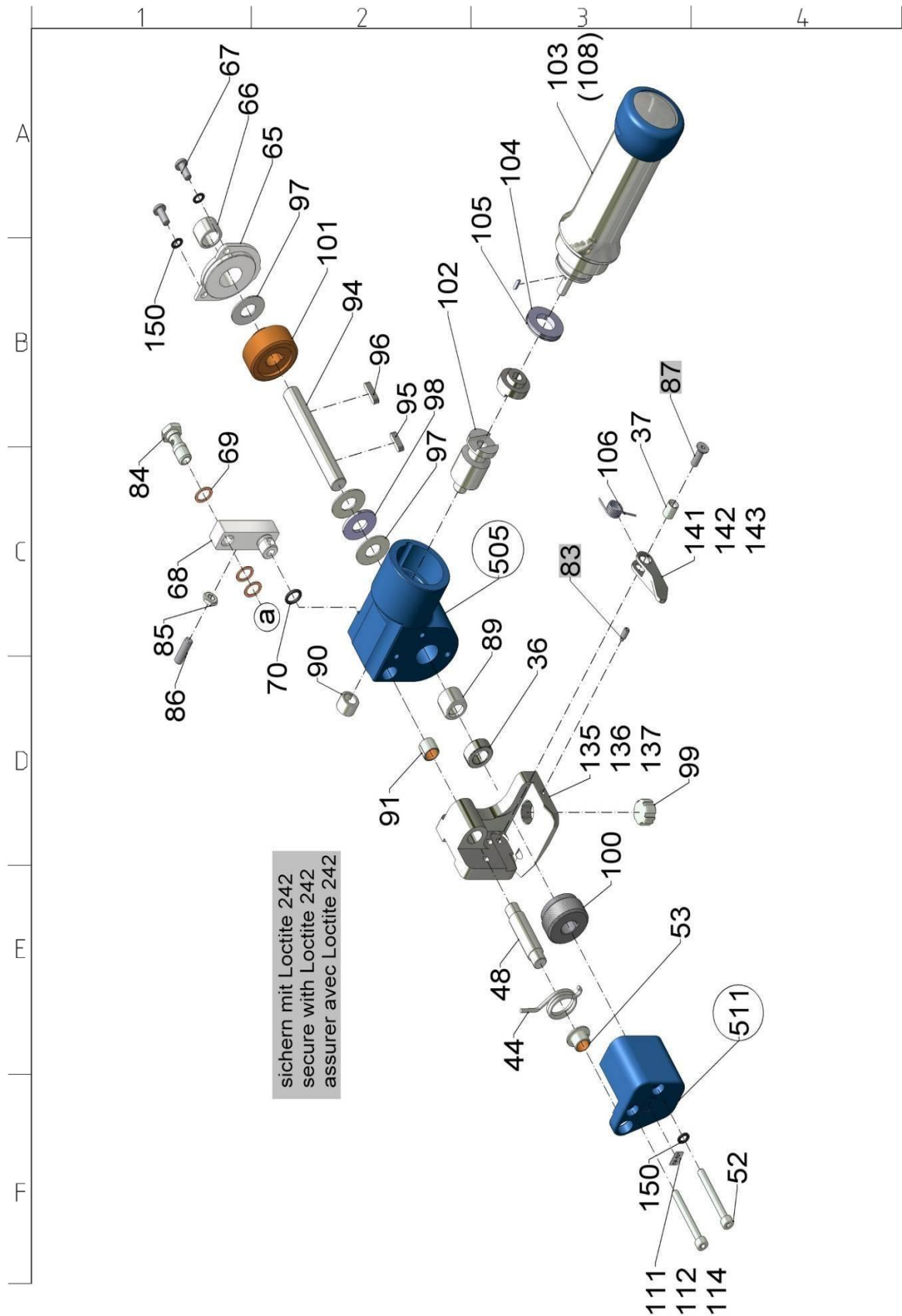
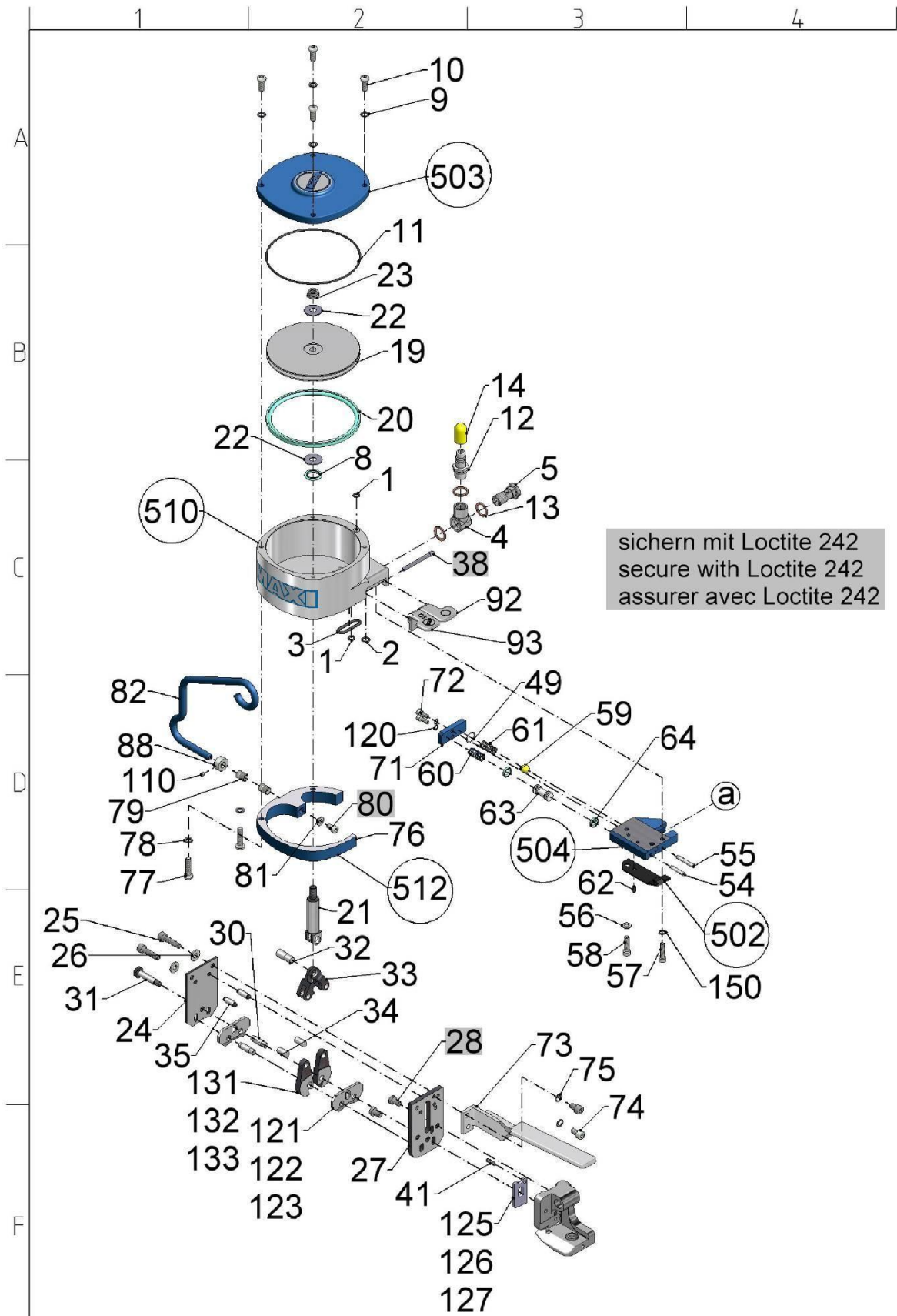


12. Exploded drawing





13. Spare parts list

Pos.	Description	St. Pcs. Pc.	
1	O ring – Ø 5 x 1.5	2	
2	O ring – Ø 7 x 1.5	1	
3	O ring – Ø 21 x 3	1	
4	Angled screw coupling G ¼"	1	
5	Banjo bolt G ¼"	1	
8	Turcon-Glyd Ring	1	
9	Locking washer	4	
10	Screw – M 6 x 16	4	
11	O ring – Ø 107 x 2	1	
12	Plug nipple G ¼"	1	
13	Gasket ring	2	
14	Submersible cap	1	
16	Operating pressure plate	1	
18	CE sign	1	
19	Piston	1	
20	Turcon-Glyd Ring	1	V
21	Piston rod	1	
22	Axial washer	2	
23	Hexagon nut – M 8	1	
24	Cover plate, front	1	
25	Screw – M 6 x 25	2	
26	Spring washer Ø 6	2	
27	Cover plate	1	
28	Screw – M 6 x 12	2	
30	Double jaw bolt	2	
31	Middle bolt	1	
32	Piston pin	1	
33	Toggle arm	2	
34	Toggle bolt	2	
35	Block bolt	2	
36	Distance sleeve	1	
37	Bushing	1	
38	Lever axe	1	
41	Dowel pin Ø 4 x 12	1	V
44	Yoke spring	1	
48	Rocking bolt	1	

Pos.	Description	St. Pcs. Pc.	
49	O ring – Ø 12 x 1	1	
52	Screw – M 5 x 45	2	
53	DU bushing	1	V
54	Pin – Ø 4 m6 x 21	1	
55	Pin – Ø 4 m6 x 26	1	
56	Spring washer Ø 5	1	
57	Screw – M 5 x 20	1	
58	Screw – M 5 x 22	1	
59	Ball – Ø 5	1	V
60	Pressure spring	1	
61	Pressure spring	1	
62	Tension sleeve Ø 3 x 8	1	
63	Piston valve	1	
64	Turcon-Glyd Ring	2	
65	Gearbox cover	1	
66	Needle bushing	1	V
67	Screw – M 5 x 12	2	
68	Rotary transmission lead through	1	
69	Gasket ring	3	
70	O ring – Ø 9 x 2	1	
71	Valve cover	1	
72	Screw – M 4 x 12	2	
73	Lifting lever	1	
74	Screw – M 6 x 10	2	
75	Locking washer	2	
76	Shackle holder	1	
77	Screw – M 6 x 25	2	
78	Locking washer	2	
79	Tolerance ring	1	V
80	Screw – M 5 x 8	1	
81	Disc – Ø 5.3	1	
82	Suspension shackle	1	
83	Threaded pin – M 4 x 10	1	
84	Banjo bolt	1	
85	Hexagon nut – M8x1	1	
86	Threaded pin M8x1x20	1	
87	Screw – M 5 x 16	1	
88	Adjusting ring – Ø 8	1	
89	Needle sleeve	1	V
90	Needle sleeve	1	V
91	DU bushing	1	V
92	Tension lever	1	V
93	Locking lever	1	V
94	Tension shaft	1	

Order from Allstrap 866-779-2673

Pos.	Description	St. Pcs. Pc.	
95	Feather key	1	
96	Feather key	1	
97	Axial washer	3	V
98	Axial bearing	1	V
99	Slide screw	1	V
100	Transport wheel	1	V
101	Worm gear	1	V
102	Worm	1	V
103	Compressed air motor	1	
104	Axial washer	2	V
105	Axial bearing	1	V
106	Yoke spring	1	
108	Compressed air motor (Exchange)	1	
110	Threaded pin M 4 x 10	1	
111	Size label 19 mm	1	
112	Size label 16 mm	1	
114	Size label 13 mm	1	
120	Locking washer	2	
121	Notching cutter 13 mm	2	V
122	Notching cutter 16 mm	2	V
123	Notching cutter 19 mm	2	V
125	Cutter 13 mm	1	V
126	Cutter 16 mm	1	V
127	Cutter 19 mm	1	V
131	Screw die 13 mm	2	V
132	Screw die 16 mm	2	V
133	Screw die 19 mm	2	V
135	Tension element 13 mm	1	V
136	Tension element 16 mm	1	V
137	Tension element 19 mm	1	V

Distributed By:

Allstrap

1719 Kenny Rd

Columbus, OH, 43212