

Order from Allstrap 866-779-2673

PR 33 454 517900



SPZ 363 000200



HR 32 427 821200



HHA 310 000100



Important! Do not dispose of this manual. It is the customers responsibility to ensure that all operators and servicemen read and understand this manual.

Order from Allstrap 866-779-2673

2. General

These operating instructions are meant to facilitate becoming familiar with the units and their intended use. These operating instructions include important notes on how the units can be exploited safely, in a technically competent way and economically. Meeting instructions helps avoid risks, reduce repairs and downtimes and increases the reliability and life of the units.

These operating instructions must be available at the location of the units. They must be read and used by all persons working with the units. Those works especially include operation, troubleshooting and maintenance.

Apart from the operating instructions and the regulations for the prevention of accidents applicable in the users country and at the place of location the acknowledged rules for safety-related and technically competent working have to be observed.

Explanatory notes on the warning and instruction symbols:



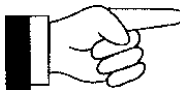
Caution!

Is used in case of risks of life and death



Attention!

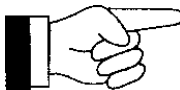
Is used in case of risks which might cause damage to objects.



Note!

Is used for general indications and indications whose disregard might cause disruption in the operational process.

2.1. Information on environmental protection



No substances detrimental to health, physical or chemical substances are used for the manufacture of the units. Waste disposal is subject to the applicable legal regulations.

Copyright © TITAN Umreifungstechnik GmbH & Co.KG 2011 All rights reserved.
The contents of this document must not be duplicated, handed to third parties, published or saved in any form, neither fully nor partly, without prior written permission by TITAN Umreifungstechnik GmbH & Co.KG.



is a registered trademark of TITAN Umreifungstechnik GmbH & Co.KG.

Order from Allstrap 866-779-2673

3. Safety regulations

Intended use

Those units are intended for the strapping of packages, loads on pallets etc.

The units were developed and constructed for safe operation during strapping.

The units are intended for strapping with steel packaging straps.

Possible misuse

Those units do not permit strapping with plastic strap.

Strapping material must not be used for the hoisting of loads, this strapping tool may only be used as intended and specified above.

**Standards applied and technical specifications:
(see EU declaration of conformity)**

Warranty and liability

TITAN GmbH & Co. KG grants a guarantee of six (6) months for all strapping units sold by it. Such guarantee covers all defects of which evidence can be given that they result from faulty manufacture or material defects.

ⓘ **Wearing parts are excluded from the warranty.**

Warranty and liability claims shall be excluded if they are due to one or more of the following causes:

- ⓘ Misuse of the tool.
- ⓘ Incorrect assembly, commissioning, operation and maintenance of the tool.
- ⓘ Operation of the tool with improper safety and protective devices.
- ⓘ Failure to comply with the information in the operating manual.
- ⓘ Unauthorized structural modifications to the tool.
- ⓘ Insufficient monitoring of tool parts that are subject to wear.
- ⓘ Improper repairs.

The manufacturer reserves the right to make changes to the scope of delivery at any time for the purpose of improving the product.

Order from Allstrap 866-779-2673

Failure to comply with the following safety instructions, in addition to errors in handling the device, can result in serious injuries.



Be informed!

Read the operation manual carefully before using the device.



Protect yourself!

Always wear eye, face and hand protection (cut-resistant gloves) when working.



Attention! Strap flies outward!

When cutting the strap, hold the top part firmly and stand to the side.

Attention! The lower part of the strap will fly outward!



Attention! Strap can brake!

The strap can break during tightening! Do not stand in the path of the strap. Make sure that no one else is in the working area.



Caution! Danger of crushing!

Do not insert fingers into the pulley area.



Caution! Strap only objects to be packed!

Make sure that no hands or other body parts are between the strap and the goods to be packaged.



Use only original TITAN replacement parts!

The use of parts other than original **TITAN** replacement parts will void the warranty and all liability.



Use only lifting gear that complies with the safety regulations!

Order from Allstrap 866-779-2673



Use only original TITAN closure sleeves!



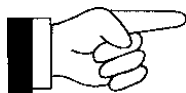
Do not exceed air pressure!

Never exceed the max. permissible air pressure of 6.0 bar.



The use of straps other than those recommended can result in broken straps during the tightening process and insufficient strapping.

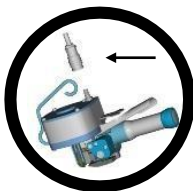
Use only corresponding quality products from TITAN!



Working place

Keep your working place tidy. Disorder at the working place may lead to the risk of accidents. During strapping operations pay attention that you stand safely and have a problem-free balance to prevent the risk of falling.

Never operate the unit at an unfavourable working position!



Use original connection coupling.

Use only connection couplings that comply with the safety regulations.



Do not use gas or compressed air bottles!

The unit must not be connected to a gas or compressed air bottle.



This units may only be operated by staff having been instructed as to the handling of the units. In case of questions do not hesitate to contact the **TITAN packaging consultant.**



Maintenance

Just a unit being problem-free is a safe unit. Regularly check the state of your unit for defective or worn parts. Never operate a unit which has defective or worn parts. Alterations to units are strictly forbidden. Disregarding this requirement may result in serious injuries.

Order from Allstrap 866-779-2673

4. Technical data

4.1. PR 33

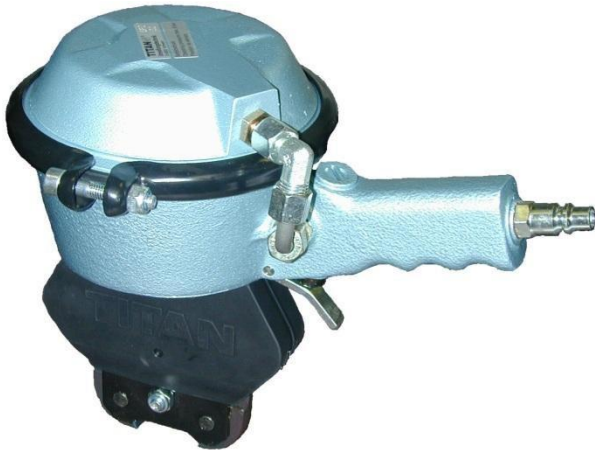


Weight:	4.35 kg
Dimension:	L = 320 mm W = 120 mm H = 140 mm
Max. air pressure:	6 bar
Tensioning force:	8,000 N
Air consumption:	0.6 m ³ /min.

Steel strap

Strap widths:	19, 25, 32 mm
Strap thickness:	0.8 – 1.0 mm
TITAN sealing sleeves:	RSK, RSL

4.2. SPZ



Weight:	3.3 kg
Dimension:	L = 300 mm W = 210 mm H = 240 mm
Max. air pressure:	6 bar
Seal:	Sleeve-type seal

Steel strap

Strap widths:	19, 25, 32 mm
----------------------	---------------

Standard quality

Strap thickness:	0.8 – 1.0 mm
Tensile strength:	up to approx. 900 N/mm ²

High-strength quality

Strap thickness:	0.8 mm
Tensile strength:	up to approx. 1,100 N/mm ²

TITAN sealing sleeves:	RSK, RSL
-------------------------------	-----------------

Order from Allstrap 866-779-2673

4.3. HR 32



Weight: 3.9 kg
Dimension: L = 450 mm
W = 110 mm
H = 200 mm

Steel strap

Strap widths: 19, 25, 32 mm
Strap thickness: 0.8 – 1.0 mm
TITAN sealing sleeves: RSK, RSL

4.4. HHA



Weight: 3.0 kg
Dimension: L = 660 mm
W = 120 mm
H = 50 mm
Seal: Sleeve-type seal

Steel strap

Strap widths: 19, 25, 32 mm
Standard quality
Strap thickness: 0.8 – 1.0 mm
Tensile strength: up to approx. 900 N/mm²

High-strength quality

Strap thickness: 0.8 mm
Tensile strength: up to approx. 1,100 N/mm²

TITAN sealing sleeves: RSK, RSL

Order from Allstrap 866-779-2673

5. Initial operation PR 33 / SPZ

5.1. Compressed air port:

The maximum distance between the compressed air port and the location of the strapping unit should not exceed **5 m**.



In no case it is allowed to run the tool without oil being in the lubricator of the maintenance unit, as this would immediately destroy the compressed air motor.

No warranty in this case!

It is recommended that the maintenance unit comprising 2 air outputs and made by the **TITAN** company is used.

5.2. Checking machines and tools before commissioning:

Before any new application it is required that the units and their attachments are checked for damage and completeness, hoses and air supply for firm seat. Exclusively use original Titan spare parts when repairing or substitute.

5.3. Commissioning:

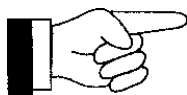
Connect hand-held units PR 33 and SPZ to the compressed air network. (max. air pressure 6.0 bar)

Motor and compressed air cylinders are lubricated by the oil mist of the compressed air.

Faultlessly prepared compressed air is therefore a prerequisite for a problem-free operation of the units. This can only be met by a functionally safe 3/8" maintenance unit comprising water separator, pressure reducing valve including pressure gauge and oiler. The oiler must discharge sufficient oil, approx. 1 drop per strapping. The length of the hose should not exceed **5 m**. The inner diameter of the hose should as a minimum be 8 mm. Attention should be paid that the hose does not form loops in which oil could be collected.

Choice of the lubricating oil: Resin- and acid-free lubricating oil whose viscosity is 2-4° E at 50°.

Max. operating pressure 6.0 bar.



Attention! Risk of tearing strap! The strap can tear when the operating pressure of 6.0 bar is exceeded. Tearing strap can result in injuries to the operator.

6. Operating

6.1. Turn-over strap

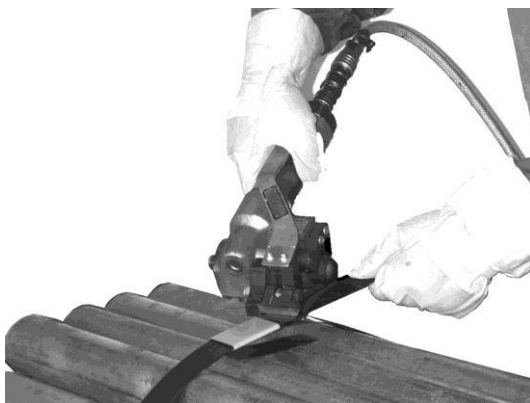
Pull steel strap out of the dispenser through the sealing sleeve and put it around the packing item. Again, slip the beginning of the strap through the sealing sleeve and bend it.



6.2. Tensioning

PR 33

Take the jack **PR 33** in your right hand and open it by pressing the lever. Then slip it on the steel strap from the right to the left. Release the lever and tension the steel strap by turning the turning valve to the left. The tension of the strap desired (max. 6.0 bar) is achieved by the control of the air pressure on the pressure gauge of the maintenance unit.



HR 32

Take both levers of the tension jack **HR 32** into your right hand and press them (open). Then slip it from the right to the left onto the steel strap. (see upper photo)

Tensioning is effected by the movement to and fro of the upper tensioning lever. (see lower photo)



Order from Allstrap 866-779-2673

6.3. Generate a sealing

SPZ

Position pneumatic locking device **SPZ** on the sealing sleeve (as shown in the photo) and notch the sealing sleeve by the actuation of the locking lever. Repeat this operation at least once.

During the sealing operation the air feed at the tensioning jack must not be stopped (tensioning jack is without self-locking device)



HHA

After the steel strap has been tightened, actuate the pushbutton on the tensioning lever and put it back then. Then apply the sealer **HHA** and firmly press the levers.

Repeat this operation at least once (1).



6.4. Cutting the strap

PR 33

Upon completion of the seal deposit the locking device and tilt the jack upwards until the steel strap breaks before the sealing sleeve.

Again, the air supply must not be stopped. Then, turn off the air feed and separate the tension jack from the steel strap again by pressing the lever.



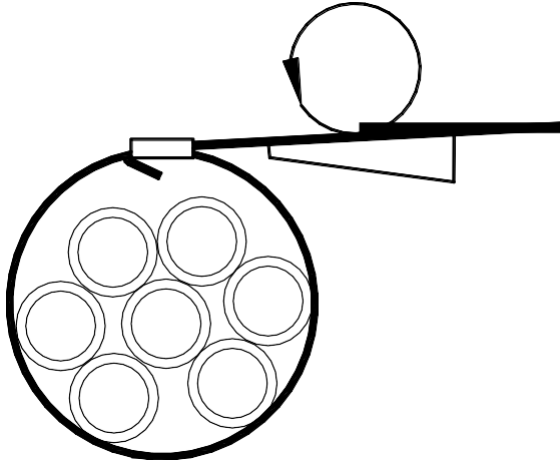
HR 32

Upon completion of the seal remove the sealing tongs. Take both levers of the tensioning jack and tilt it upwards such that the strap tensioned bends behind the sealing sleeve.



Order from Allstrap 866-779-2673

6.5. Course of strap

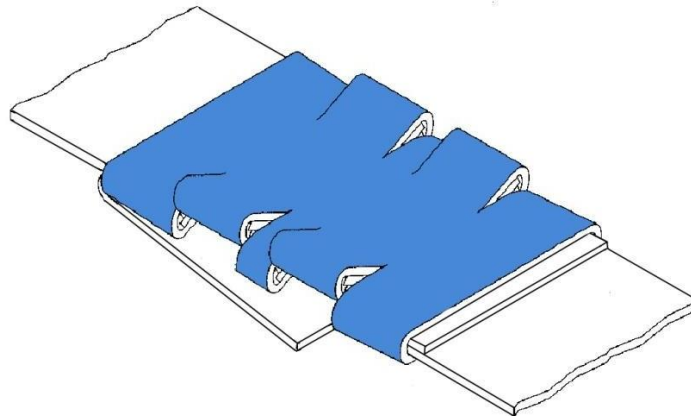


6.6. Check the seal

The following picture shows a correctly carved seal.

Check the seals regular

- ⦿ for crackings on the sleeve and
- ⦿ for neat cutting edges

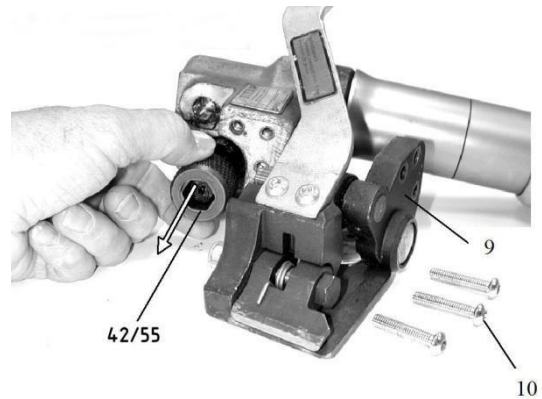


Order from Allstrap 866-779-2673

7. Maintenance

7.1. Change of tensioning wheel at the PR 33:

Loosen the 3 fastening screws (10) and remove the bearing plate (9). The tensioning wheel (42/55) can be accessed and removed from the transport shaft. Mounting in reverse order.

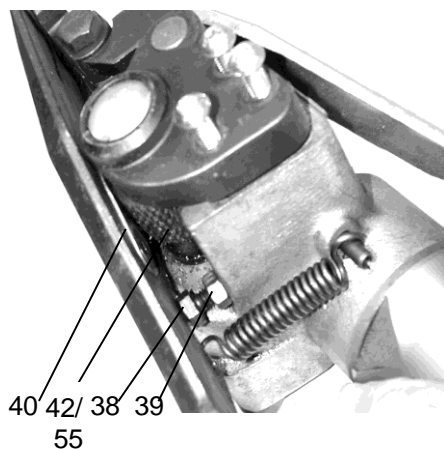


7.2. Setting the distance between idler and sliding plate:

PR 33

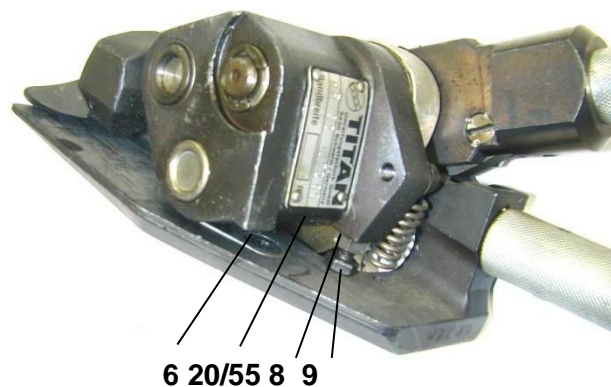
After the installation of the new tensioning wheel (42/55) the clearance between wheel and guide plate (40) must be checked and, if required, readjusted. Setting is performed by means of the setting screw (38). For that purpose, loosen the counter nut (39).

The clearance between the tensioning wheel and the guide plate should be 0.2 mm.



HR 32

The **distance between idler (20/55) and sliding plate (6)** should be 0.2 mm. Setting is effected by means of an adjusting screw (9). For that purpose, the counter nut (8) is loosened, the **clearance of 0.2 mm** is adjusted by means of the adjusting screw and following that, the counter nut is tightened again.



7.3. Cleaning and maintenance:

Dirt and abrasion impair the function of the units.

Therefore, all units should be air-cleaned with compressed air in the area of the strap guidance, notching cutters, tensioning wheel and joints after being used and, following that, be wetted with resin-free thin spray oil.

Tool inspection!

Perform a **daily** visual inspection of the outside of the unit. The early detection of damaged parts extends the life of the unit.
Replace all damaged parts

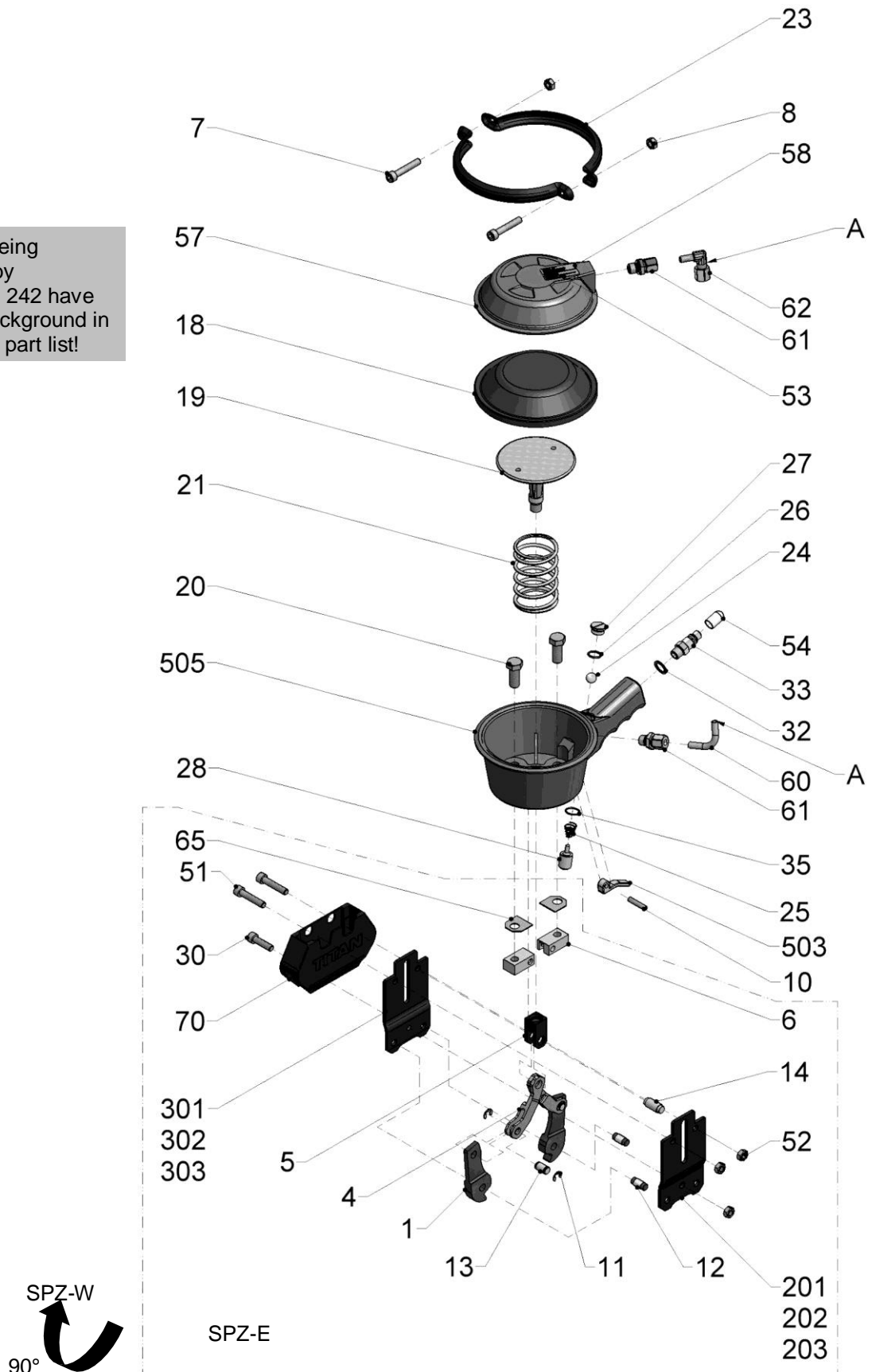
12. Spare parts list PR33

Pos.	Description	St. Pcs Pc.	
1	Worm	1	
2	Pin Ø4m6 x 20	4	
3	Worm wheel	1	
4	Gear cover	1	
5	O-ring Ø45 x 1,5	1	
6	Deep-groove ball bearing	1	
7	Screw M6 x 16	3	
8	Washer	3	
9	Bearing plate	1	
10	Screw M6 x 25	3	
11	Washer	3	
12	Pin Ø3 x 20	1	
13	Sealing washer	1	
14	Conveyance shaft	1	
15	Key	1	
16	Pintle	1	
18	Distance sleeve	1	
19	Tension element	1	V
20	Articulated rail	1	V
21	Leg spring	1	V
22	Screw M8 x 55	1	
23	Nut – M8	1	
24	Handle	1	
25	Screw M6 x 12	2	
26	Washer	2	
27	Tension spring	1	V
28	Beak	1	
29	Quick-acting coupling	1	
30	Pin Ø5 x 24	1	
31	Needle bearings	1	
32	Wave washer	4	
33	Axial needle collar	2	
34	Needle bush	1	
35	Needle bush	1	

Pos.	Description	St. Pcs Pc.	
36	Needle bush	1	
37	Circlip	1	
38	Adjusting screw	1	
39	Nut – M6	1	
40	Guide plate	1	V
41	Screw M6 x 10	1	
42	Idler	1	V
43	Nameplate	1	
44	Groove pin	2	
45	Centring bush	1	
46	Turning sleeve	1	
50	Coupling plug	1	
51	Cap	1	
52	Distance washer	1	
53	Operating pressure plate	1	
55	tensioning wheel (HT)	1	V I
500	Gearbox	1	
510	Compressed air motor	1	
511	Compressed air motor	1	R

13. Exploded drawing

Screws being secured by LOCTITE 242 have a grey background in the spare part list!



14. Spare parts list

Pos.	Description	St. Pcs Pc.	
1	Screw die	2	V
4	Articulated lever	2	
5	Swivel head	1	
6	Plate fastening	2	
7	Screw M8 x 45	2	
8	Nut – M8	2	
10	Screw M6 x 30	1	
11	Plate	4	
12	Tong head pivot	2	
13	Swivel head pivot	2	
14	Swivel head pivot	1	
18	Diaphragm	1	
19	Piston	1	
20	Screw M12 x 30	2	
21	Pressure spring	1	
23	Strap half	2	
24	Ball	1	
25	Pressure spring	1	V
26	O-ring Ø14 x 2	1	
27	Seal	1	
28	Valve pivot	1	
30	Screw M8 x 30	1	
32	Gasket	1	
33	Coupling plug 1/4"	1	
35	O-ring Ø16 x 1,5	1	
36	Quick-acting coupling 3/8"	1	
37	Beak	1	
51	Screw M8 x 40		
52	Nut – M8	2	
53	Operating pressure plate	3	
54	Cap	1	
57	Cylinder cover	1	
58	Nameplate	1	
60	Elbow	1	

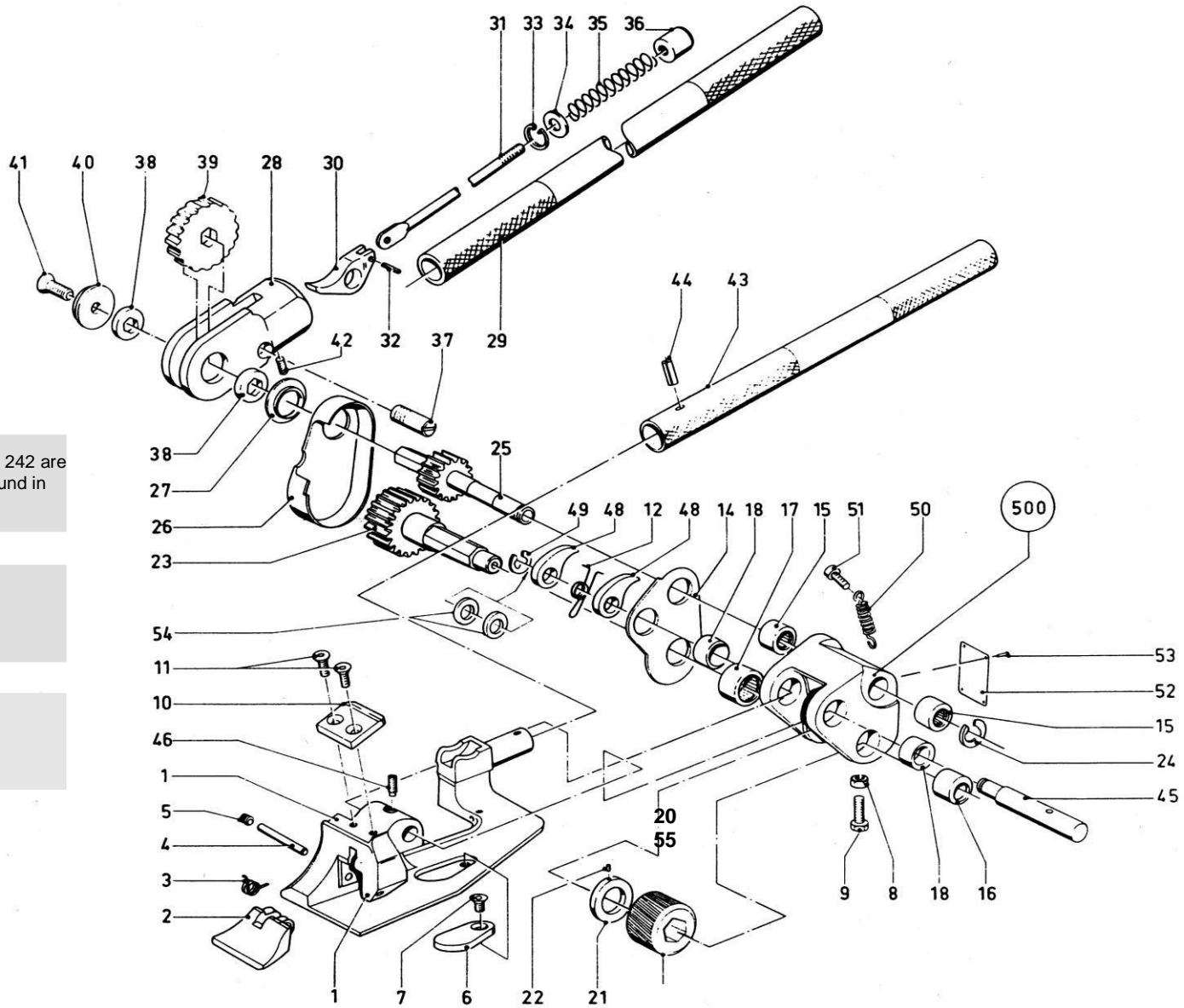
Pos.	Description	St. Pcs Pc.	
61	Straight male stud coupling	2	
62	Adjustable angle	1	
65	Spacer plate	2	
70	Rubber protection	1	
201	End plate with thread 32mm	1	V
202	End plate with thread 25mm	1	V
203	End plate with thread 19mm	1	V
301	End plate without thread 32mm	1	V
302	End plate without thread 25mm	1	V
303	End plate without thread 19mm	1	V
503	Angled lever	1	
505	Lower part of casing, complete	1	
	incl. items 24,26,27,29, 31-33,35, 60 - 62		

Order from Allstrap 866-779-2673

PR33/SPZ/HR32/HH A

H363 EU 20/11

Screws secured by LOCTITE 242 are provided with a grey background in the spare parts list.



15. Exploded drawing

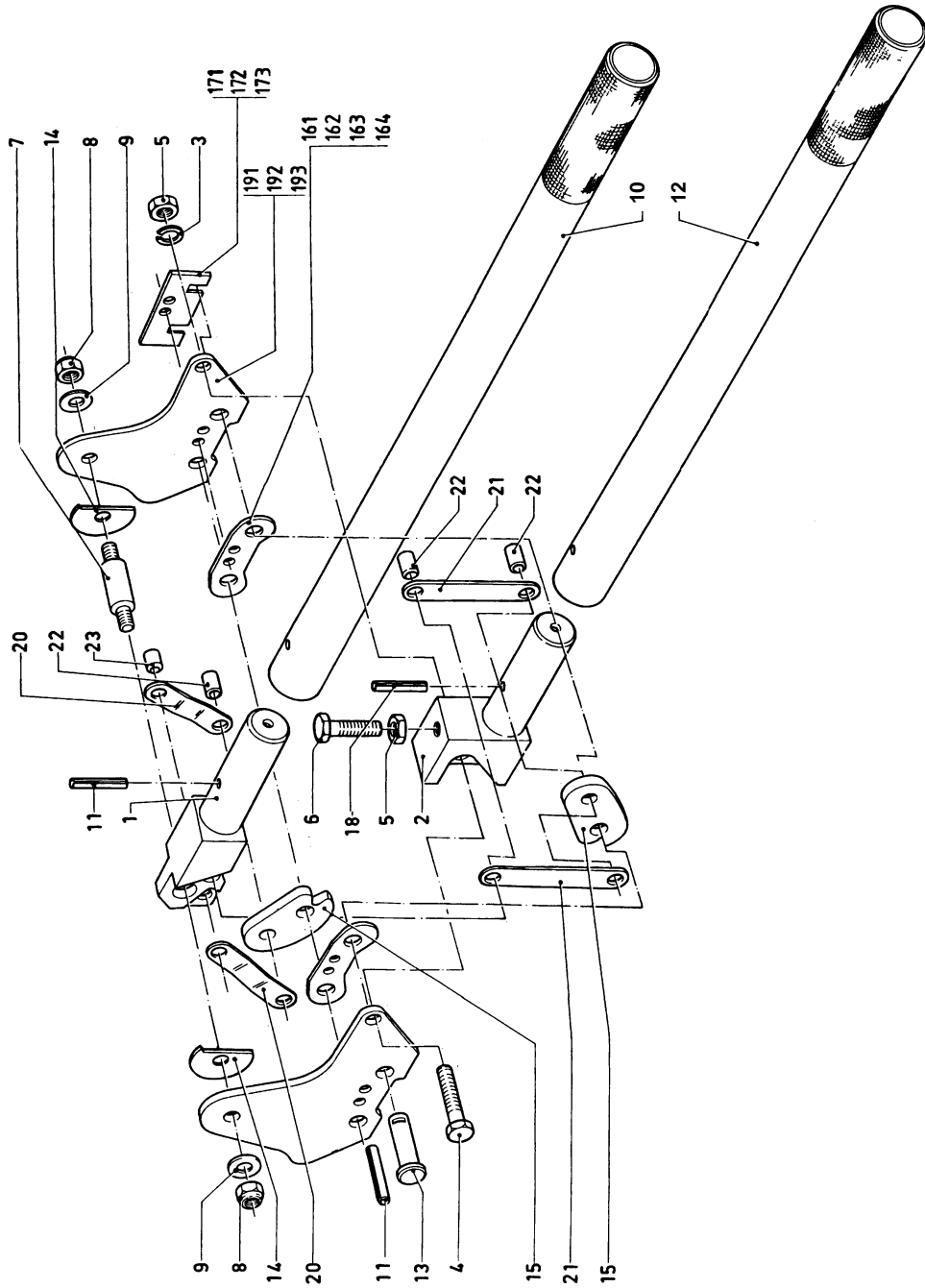
TITAN

16. Spare parts list HR 32

Pos.	Description	St. Pcs Pc.	
1	Round tensioning element	1	V
2	Buckling rail	1	V
3	Leg spring	1	V
4	Pin Ø6m6 x 40	1	
5	Screw M8 x 8	1	
6	Sliding plate	1	V
7	Screw M6 x 10	1	
8	Nut – M6	1	
9	Adjusting screw	1	
10	Stop plate	1	
11	Screw M6 x 12	2	
12	Leg spring	1	V
14	Bearing plate	1	
15	Needle bush	2	
16	Needle sleeve	1	
17	Needle bush	1	
18	Drill bush	2	
20	Idler	1	V
21	Collar	1	
22	Screw M3 x 5	1	
23	Long-face pinion	1	
24	Washer	1	
25	Pinion shaft	1	
26	Gear cover	1	
27	Sealing washer	1	
28	Fork head	1	
29	Pipe for ratchet wrench	1	
30	Tension catch	1	
31	Bar for release	1	
32	Pin Ø4 x 10	1	
33	Circlip	1	
34	Disk	1	
35	Pressure spring	1	V
36	Pusher	1	

Pos	Description	St. Pcs Pc.	
37	Headless Screw	1	
38	Bearing ring with hexagon socket	2	
39	Ratchet	1	
40	Disk	1	
41	Screw – M8 x 16	1	
42	Screw – M5 x 8	1	
43	Pipe for body	1	
44	Pin – Ø4 x 22	1	
45	Axle	1	
46	Threaded Pin – M6 x 10	1	
48	Detent blade, long	2	
49	Circlip	1	
50	Tension spring	1	V
51	Screw M6 x 10	1	
52	Type plate	1	
53	Round head grooved pin Ø2 x 5	4	
54	Shim ring	2	
55	Tensioning Wheel (HT)	1	V I
500	Steel rocker, complete	1	

17. Exploded drawing



18. Spare parts list HHA

Pos.	Description	St. Pcs Pc.	
1	Punching lever	1	
2	Tongs holder	1	
3	Spring washer	1	
4	Screw M8 x 35	1	
5	Nut – M8	2	
6	Screw M8 x 30	1	
7	Punching lever pivot	1	
8	Nut – M8	2	
9	Disk	2	
10	Lever	1	
11	Pin Ø6 x 28	2	
12	Lever	1	
13	Pivot	2	
14	Pivot pressure plate	2	
15	Cutter insert	2	V
18	Pin Ø6 x 30	2	
20	Toggle	2	
21	Toggle	2	
22	Pivot	3	
23	Pivot	1	
161	Bracket 19 mm	2	V
162	Bracket 25 mm	2	V
163	Bracket 32 mm	2	V
164	Bracket 32 mm	2	V
171	Slider 19 mm	1	
172	Slider 25 mm	1	
173	Slider 32 mm	1	
191	Cover plate 19 mm	2	
192	Cover plate 25 mm	2	
193	Cover plate 32 mm	2	

Order from Allstrap 866-779-2673

**The TITAN
range of products**

Strapping tools
for steel and plastic strap

**Strapping machines and
aggregates**
for steel and plastic strap

Baling systems
for steel and plastic strap

Crimp systems

Strip joining devices

Strapping
Steel and plastic strap

Seals

Accessories

Distributed By:

Allstrap

1719 Kenny Rd
Columbus, OH, 43212